



JANUARY 2025

Happy New Year from Grow Paparoa!

We hope everyone had a lovely festive period and a bit of a rest! Someone forgot to tell the gardens it was holiday time and so we have been in there as usual which has been lovely. It is such an abundant time of year and even though our regular outlets have been closed we have been ensuring our fresh vegetables have been reaching as many people in the community as we can, mostly through the various community Pataka Kai sheds.

Passata Day!

We are super excited about our third upcoming Passata Day! The tomatoes are coming along nicely and we are freezing any early ones ready for the day. Here is a quick guide to storing your tomatoes to ensure a good supply of passata for the year.

Freezing tomatoes:

1. After picking rinse tomatoes in cold water.
2. Remove green stalk and core tomato.
3. Pop into a container and freeze.

Before processing the tomatoes we recommend defrosting them for 48 hours. Any frozen pieces tend to gum up our machines and stop the process until the machines are cleaned out. We recommend coring the tomato as we have found in the past that if not cored the resulting passata can have a slightly bitter taste and as I myself found out last year it is much nicer to core a fresh tomato than it is a slippery defrosted one!

We will open our bookings for the day in February. However please feel free to email Laura at lkateley@gmail.com to register your interest and we will email when the bookings are open.

Katie Fullerton



gmail.com to register your interest and we will email when the bookings are open.

Enter the Show!

If you haven't already spent the year planning your entries for the Paparoa A&P show, now is the time!

The 148th show will be held on Saturday 1 February at the Paparoa Showgrounds, and it is a fantastic experience, for locals and out of towners alike. It's a great opportunity to watch the exciting rural events that New Zealand is so famous for, but the real action takes place in the War Memorial Hall.

The only thing better than attending the A & P show is entering the indoor show. It doesn't matter where you live or what you enter. We drive up from rural Waikato every year so that we can become part of the welcoming and unique community that is the Paparoa Show.

Almost everyone can find a category to enter because there is such a wide range of possibilities (and it's cheap!). The serious competitors enter stunning fruit, flowers, and vegetables, or handiwork that looks professionally made, but the rest of us just have a go, with some knitting or sewing, a loaf of bread from the breadmaker, a jar of jam, or your signature shortbread or cake. So many of the categories need more entries so that there's a bit of competition to achieve a first prize. Your work doesn't have to be world class; it just has to be your work. There is such a feeling of pride in seeing your entries on display, knowing that you're part of a Paparoa tradition that dates back to the late 1870s! That is not an everyday experience, but it's an every year one, and 2025 might be your year to shine.

Celebrate being part of your very special community by having a go!

Sue Dobbs

The full range of categories for the Indoor Show and information on trade stalls can be found online at www.paparoashow.org.nz or you can pick up a paper copy of the schedule from Skelton's Drapery.

2025 Paparoa A&P Show
Saturday February 1

Photo: The indoor competition in 2024.



INSIDE

- School News 3
- Council Mark 4
- Letters From the Old PO 7
- Selwyn Centre Christmas 9
- Books & Bookclubs 10
- Or Family to Yours 11
- What's On 18
- Community Directory 19
- Tides 19



**RIVERSIDE
GLASS & GLAZING**

Kyle
021 1376353

Glass and glazing needs,
cat doors to caravan
windows. Winz quotes
available. Great rates,
mobile eftpos.

Paparoa Press

PUBLISHED MONTHLY BY
Progressive Paparoa Inc. (PPI),
for Paparoa, Pahi, Matakohē,
Whakapirau and Tinopai.

CIRCULATION 1,050

CONTACT US:

- press@paparoa.org.nz
- PPI, PO Box 107, Paparoa 0543
- www.paparoa.org.nz

ADVERTISING

Rate Card available by email
Booking & Copy deadline:
15th of month
Publication date 1st Wed of month

At the market

Making a return to the market after a year off is Steph Bristol, who trades as Fantail Farm Fibres, with a range of felted products.

Steph bought a small block just out of Paparoa about 20 years ago and started out with some mohair goats. She still has some, and they produce the most gorgeous



silky fibre that is similar to human hair in that it can be styled, which makes it ideal for use as dolls hair. Mohair is not so suitable for felting though, so Steph has added some sheep to the flock and now produces her own lambs wool which she gets washed and carded, before dyeing and felting.

In 2012 they shifted a house onto the property and set it up completely off grid, using solar, gas, and 12 volt appliances. At the time of writing they have the place on the market as they have their eye on a property overlooking the harbour.

Steph has had a long association with the Spirit of Adventure Trust, and their sailing ship the Spirit of New Zealand. She started as a volunteer in 1995, and in 2001 she took on full time work with them in the office. In 2012 she moved onto the ship as a cook, working 10 days on and 10 days off. She made some great memories over the next 10 years sailing with 40 teenagers and 14 crew in all sorts of conditions. She retired a couple of years ago, so now

gets to spend more time in Paparoa. Steph's partner, Chris, still works in Auckland, but spends the weekends helping on their block.

Steph makes her own soaps and then felts them with the lamb's wool. This makes the soap last longer, produces a great lather, is good for exfoliation, and is naturally antibacterial and antifungal. She uses a range of essential oils to scent the soaps and also leaves some unscented for those with allergies.

To supplement her soap range Steph also sells small soap racks (wooden or 3D-printed) which she recommends for use with the felted soaps. She also has felted dryer balls which go in the dryer to reduce drying time and static, and teddy bear kits that contain everything required to make your own bear.

Steph is an active member of our community, organised the Artisan markets, and is a current member of the Lions Club. Say hi to her next time you're at the market and ask her more about the soaps and felting process.

Pete

Roger Price 09 431 4590
Mechanical Services
Lifestyle Autos
Mobile Mechanic



**PAPAROA
FARMERS'
MARKET**

EVERY SATURDAY
THE VILLAGE GREEN 9-12

Market Manager
Alistair Gordon
027 52 54 782

A reminder to our contributors!

We need all advertising material by the 15th of the previous month and all editorial copy by the 20th. We cannot guarantee the publication of any material received after these dates.

While we always welcome editorial content we reserve the right to decline or hold over any articles outside our regular columns.

Opinions expressed in Paparoa Press are the author's own and not necessarily those of the editorial team or PPI.

Paparoa School - end of year

The kids have finished for the year and we have a few days of tidy up to complete. We have had a fast and furious finish to the term! The whole school went on a trip to the Auckland Zoo for the day and what a success it was.

This trip was paid for by some of our Possum Purge fundraising money and I know all of the kids enjoyed the experience.

On Wednesday 11th December we had our Prizegiving. We had a great turn out of family, friends and supporters of the school which is such a great way to celebrate the achievements of our tamariki. A huge congratulations to the following students:

Garden to Table Award: *Jed Holland*

Environmental Award: *Korey Cooper*

Keegan Roberts Sports Award for Overall Sports Achievement: *Jed Holland & Olive Hames*

Johnston Murray Cup for Music: *Zoë Colquhoun*

Mainfreight Award for Excellence in Attitude: *Fabita Moyes*

Audrey Metcalf Cup for Best All Round Effort: *Lucy Stevens*
BOT Ambassador Award: *Olive Hames*

BOT Dux: *Jed Holland*

As we say farewell to another year at Paparoa School, we are looking forward to another exciting year ahead. We have had roll growth in 2024 and so we are opening our third classroom at the beginning of the 2025 year. We are welcoming Jodi Bevis to our staff and she will be teaching the Year 3 & 4 students. This is a big milestone for our school, and we are delighted to be able to keep small numbers in each class.



2025

Tuesday 28th & Wednesday 29th January – school open for enrolment 9.00am – 1.00pm

Wednesday 29th January – Teacher Only Day

Thursday 30th January – School starts for all students 8.30am

Website:
www.paparoa.school.nz

Facebook:
www.facebook.com/PaparoaSchool

From all the Staff, BOT and Students of Paparoa School, we wish you a Happy and Safe New Year.

Nga Mihi Nui
Karyn Taylor
Principal



Paparoa Print Shop

**At Skelton's
Paparoa Drapery
431 7306**



paparoaprint@gmail.com
all your printing needs

FARMWORK SERVICES

For all types of fencing, stockyards, handyman work, tree felling, tractor work etc.



phone

**Mike 09 431 6509
027 203 2694**

email

farmwork.services@gmail.com

**12 tonne digger now available
for driveways, farm tracks, hole boring etc**

Paparoa Motor Camp
CABINS | TENTS | CARAVANS | MOTORHOMES
17 Pahi Rd, RD1, Paparoa, Northland. Ph: 09 431 6515 Email: paparoamotorcamp@xtra.co.nz

Set in a quiet rural area, within easy walking distance to picturesque village with shopping facilities, a general store & post office, service station, restaurant, friendly country pub, takeaways, café, gallery, bush walks. Only 6kms to the Matakoho Museum.
www.paparoamotorcamp.co.nz



**Self Contained Cottages
Cabins with TV
Tent and Campervan sites**

**Contact
09 431 6515
Cnr SH12 and Pahi Rd**

REX BROWNE CONTRACTING


- Limestone & Metal Cartage
- Truck & Digger Hire
- Farm Roads
- Earthwork & Dams
- House Sites & driveways
- Wrapped Silage & Hay
- Cultivation
- Fencing & Mulching



Maize Silage planting & harvesting

☎ 09 431 7556
☎ 021 720 590

Al's Upholstery
Alan Hilton




Automotive Furniture Covers Seats
over 30yrs experience

021 0709101
144 Franklin Rd, Paparooa

DENTURE CARE

Repairs and adjustments
Maungaturoto local
Decades of experience
All work done in-house
Same day or next day service



phone: 0274 942 674
boident@xtra.co.nz

Paparooa Store

Proudly Supporting Paparooa

OPEN 7 DAYS

Monday-Sunday 7am-7pm,



We stock a great selection of
CONFECTIONERY, ORGANIC, DELI, MEAT,
FRUIT, VEGES, FROZEN GOODS, BEER, WINE
and a wide range of grocery items at excellent prices

EFTPOS NZ HERALD POST CENTRE

Phone / Fax 431-7320

Cnr. Franklin Road and State Highway 12



Council Mark says-

My concern is about process

We had an interesting issue at our December meeting - how to deal with a request to post a video on Council's media channels that hadn't been produced at Council's behest.

The video, bankrolled by the Mayor in his personal capacity, was about the mangroves in the Mangawhai Harbour.

It was really well done, and I learned some things in addition to confirming my views about how the impact of human activities on the land in harbour catchments has optimised the conditions for spread of mangroves with the influx of nutrient-laden silt. Indeed, that was one of the motivations I had in setting up Otamatea HarbourCare, which is still going strong without me eleven years on. One of the video interviewees mentioned that there were opponents of removing any mangroves; I don't know why, and they didn't get a voice on the video. I would have been interested to know. If that has piqued your interest, the video is easy to find on Youtube if you can't find it on the Council website.

My concern is about process. We don't have a policy for dealing with the use of Council media channels in this way. The Mayor made a good point in quoting from the front page of the Council's website: "Council's role is to provide local leadership and facilitate the delivery of services and activities that promote community well-being throughout the Kaipara District." That might be a starting point for developing a policy which would allow for issues outside of Council's brief to be canvassed. Technically speaking, mangroves are

outside our district - below Mean High Water Springs is in the Regional Council's jurisdiction, not ours. That still leaves me with the problem of how to deal with future requests to use KDC media channels, in other words, the precedent that this has created.

The answer according to Deputy Mayor Larsen is that the person wanting to use KDC media channels will... "need to approach and lobby an Elected Member and get them to gain a majority [of votes] to be able to do it." In other words, if someone wants Council to post their video for or against say, Covid vaccination or "free speech" they just need to lobby an Elected Member to get the item on a council agenda. And there we have it, ladies and gentlemen, the politicisation of KDC's media channels.

Maybe you're okay with that, and maybe the council should be providing an on-line forum for such issues to be canvassed. Council does have a role in advocating for things outside its immediate responsibilities, things like improvement of our internet and cell phone networks, state highway and rail networks and health services. If we are to allow for people external to the council organisation to do that then we need to set some policy-based boundaries to it so that it doesn't get abused by external political interests. What do you think?

Mark Vincent
Otamatea Ward Councillor
021 0829 8037

**The Paparooa Press is also
available online at
paparooa.org.nz**

Locals helping locals

In December the Paparoa County Depot Trust made available \$25,178 as donations to ten local organisations who had applied for assistance.

These funds are the surplus generated by the trust from its activities in Depot Rd, Paparoa. The trust owns property leased to local businesses, houses the Paparoa Fire Brigade, plus storage units that are leased to the general public.

As a volunteer organisation costs are kept to a minimum and the surplus is available for distribution. Trust Chair, Graham Taylor said "It's a great pleasure to be able to help a wide range of local organisations to achieve their goals. In the last 12 months the Depot has distributed \$59,448 plus three sponsorships of \$3,000 each. That \$68,448 is

going to make life easier for the recipients who run the organisations that make our community a great place".

The recent recipients are - Ruawai Promotions and Development Group, Kaipara Marchers, OHS Yr 7-8 William Pike Challenge students, Maungaturoto Play Centre, Paparoa Primary School, Hukatere Hall Trust, Paparoa War Memorial Hall, Paparoa Medical Society, Paparoa Community Library, and Paparoa Sports and Recreation Society. The sponsorship recipients are: North Kaipara Agricultural Association, Maungaturoto Country Club and Otamatea Community Services. PCDT

Maungaturoto and Districts Rotary

Senior's afternoon in December

Once again we had a good turnout of people from our community. Thanks to Terri for decorating the supper room that created a fantastic atmosphere. Thank you also to Linking Hands for transporting people who needed to be brought from the Maungaturoto Retirement village and the Rest Home.

Maura's singers did not disappoint. Once again we were treated to an hour of fantastic singing from a very talented group of youngsters. Both serious and humorous songs were presented either as individuals or in groups. They wound up their performance with some traditional Christmas songs. We are very fortunate to live in a community where young people are prepared to share their talents. Thank you Maura for arranging this.

Toi Maori Festival

Thanks to President Tim and Stella for helping out with this event on 30 November at the High School. Once again, the talent of our young people came to the fore and it is good for them to see others on stage as well.

President's Scholarship

President Tim really enjoyed reading all three applications and found it impossible to separate them so has decided to award \$500 to: Annaliese Allen, Max Bull and Willow Campbell. All three have been involved in the community and have aspirations for the future. Congratulations to these three. We look forward to following their progress.

McSweeney Brothers Band

This is just a "heads up" for the 22nd March 2025 at the Maungaturoto Country Club.

Come along and help us soothe your "Achey Breaky Heart", featuring the legendary McSweeney Brothers. More details in the New Year.

Remember that gifts of time and love are the ingredients of a Happy Christmas.

Eileen

Birt & Currie Surveyors Ltd



Local Phone
09 280-9591

**Timely,
friendly &
personal
service**

info@landsurveyors.co.nz
www.landsurveyors.co.nz
PO Box 120 Paparoa 0543

BETTER CONTAINERS

Rent Spacious & Secure Containers Today!

Need extra space? Our 10 & 20 ft storage containers in Maungaturoto are the perfect solution!

- One use containers
- Safe, weather resistant
- Easy one handle door opening
- Extra ventilation
- Store your belongings with peace of mind
- Lockbox padlock
- Ideal for personal or business use

PHONE GARY 021 902 087



THE KAURI MUSEUM

**Guardians of the kauri story
Past, present, future**

Museum open 7 days 9am-5pm

We are very excited to have opened a spectacular new attraction at the Museum - the Forest Walkway.

Come and see it for yourself!

Gumdiggers cafe: open 10am-3pm

5 Church Road, Matakoho ph 09 4317 417 www.kaurimuseum.com



**ROGER BULL
OSTEOPATH**

now working from:


**The Yoga Barn, Mangawhai;
& Maungaturoto**


pain
injury
infants
health recovery
general wellbeing

To book text Roger: 021 234 0226

TR ENGINEERING SERVICES

turning/milling/welding/fabrication

 021 0664 338

 trengineer232@gmail.com

New toilets for Pahi

New toilet facilities for Pahi were opened in December with a ribbon cutting by Deputy Mayor Jonathan Larsen. The old toilet facility was tired and well past its functional life, with a disposal system in poor condition.

The new clean, modern toilets are wheelchair accessible with baby changing facilities and will cater for the many wharf users, boaties, campground visitors and locals, particularly during the summer months when tourist numbers increase.

The project team worked closely with the Pahi Boat Club, Pahi Community Hall Committee, Pahi Domain Society, Te Uri o Hau Environs, and Department of Conservation (DOC) to determine the design and location. Physical construction was carried out by Ventia.

Feedback from the community saw the final look of the loos draw on heritage-inspiration, with a pitched corrugated iron roof, verandah, and panelling in keeping with the Pahi Hall

next door.

The work was supported with a grant from the Tourism Infrastructure Fund (TIF), with the remainder of the project cost debt funded. The new toilets are supported by a wastewater holding tank



and a water tank. Works to be completed in the new year include removal of the old toilet block. Funding has been allocated in the Long Term Plan 2024 – 2027 to design and construct a wastewater disposal field, the second phase of the project.

KDC



Need a Shed?

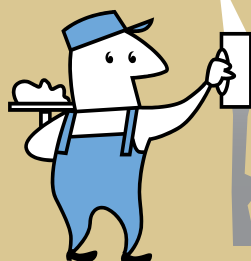


- Timber and steel buildings any size
- We do plans and engineers designs for council
- Farm sheds
- Commercial buildings
- Feed pad shelters
- Goat/Chicken sheds
- Horse stables
- Lifestyle sheds
- Excavation, driveways and concrete floors

Your local builder: Andre Nicolai 021 202 9854

TINOPAI PLASTERERS

WE GUARANTEE THE HIGHEST QUALITY FINISH



35 Years experience in...

- GIB Stopping
- Fibrous Plastering

for FREE quote, call us now!
Trevor 021 0300 073

Letters from The Old Post Office...

Tea...



Dear Reader, Happy New Year and I trust that your festive season was pleasant and tranquil. Neither temper nor voice raised, no mobiles flung across the room nor laptops pulverised in a berserker type fury.

I assume you think you know where this rant is going and you would be partially correct. Why our beloved councils should choose to have their suppliers' bank details verified by an AUSTRALIAN/American outfit passes my understanding. Suffice to say that all contact may be made through magic portals that require usernames etc (of which none have been allocated) and lead you through a maze of "useful" articles. May the hounds of Hell pursue them into eternal damnation. Mind you they already live in Australia/America.

Having taken a calming breath, in for five, hold for five, let out for five. (Why don't we all try it? May help those poor souls who wander across my ramblings and find their brains frying.) And made a nice cup of tea. Warmed the teapot, boiled the water. Poured over leaf tea (there is no other)¹, left to brew, covered with charmingly if vibrantly coloured tea cosy, then poured onto milk in the china cup de jour. I found my thoughts turning to fellow tea drinkers. We are an elite group, special even, understanding the

importance of the tea ritual. Taste before haste. And this small but select group has just been added to and by no other than a relative by marriage. Imagine my joy when on holiday to discover that not only was he a fellow tea leaf addict but appreciated the importance of the china cup and in fact had brought his own. All I can say is it was truly tidings of great joy.

What better way to toast the new year (well, next best to Champagne)

ngā mihi o te tau hou

Deb

1. Many tea bags contain a thermoplastic such as polypropylene (PP, the recyclable plastic coded "5") or plant-based polylactic acid (PLA, "7").

The plastics are food-grade but that doesn't mean they break down easily www.consumer.org.nz/articles/plastic-in-tea-bags

Bone china is non-porous. This means that it doesn't absorb any of the flavours from the tea, so the tea retains its full flavour.

Bone china is thin. This allows the tea to cool more quickly and prevents it from becoming bitter.

Paparoa Community Gym

The gym is coming together and will be open at the Sports Pavilion on the Showgrounds early in the New Year. We have had a generous donation for Paparoa County Depot Trust to buy some equipment alongside donated gear, and it has been painted, with new flooring and nearly ready to go.

Fees for the year will be \$150 per person, over 16 years only, or \$15 each month. We have two people available to show new members through the gym and familiarise them with the equipment before starting. If you are interested in joining please email hames.jones@xtra.co.nz for a membership form.

Exciting times for Paparoa! Thanks to everyone who has been involved in making this happen.

Libby

for Paparoa Sport and Recreation Association

Business for Sale

Books@Ruawai, is looking for a new owner.

Includes the 2 shops full of approx 70,000 books with the Database which enables worldwide online selling 24/7. There is also a 20 foot container with stacks of boxes not yet sorted.

Featured in "The Book Collector" by Tony Eyre (2023), this is a great opportunity for a bookaholic to indulge their passion.

Asking price \$12,000. Contact Robyn 027 200 5653

Books@Ruawai is open throughout the holidays. Usual hours Mon, Wed, Fri 10am - 3pm and Saturdays 10 - 1pm.

Rhoda Morrison

Consistent Award Winning Salesperson

20+ years in the industry

0274 800 691

09-431 6912

rhoda@fnkaipara.co.nz

www.roperandjones.co.nz



first national
REAL ESTATE | Roper & Jones

Dargaville Realty Ltd

Licensed REAA 2008

JORCO CONTRACTORS

AG & CIVIL SPECIALISTS

SERVICING KAIPARA AND NORTHLAND



Depots at:
580 Neems Road
MATAKOHE

634 Kara Road
MAUNGATAPERE

Call Trevor for a free
no obligation quote

☎ 021 259 0459

✉ trevor@jorco.co.nz

Facebook: @jorcocontractors

- Roading and Earthmoving
- Excavators, Trucks, Grader and Roller
- 30tn capacity Widening Transporter
- Bulk Fertiliser and Metal Cartage
- Fertiliser and Lime Spreading with GPS mapping
- 4x4 Truck and Tractor Spreaders
- Silage, Hay Baling and sales
- Cultivation 3-6m Power Harrows and Discs
- Mulching

UR Covered & Northland Rescue Helicopter

“Our Insurance Policy in the Sky”



Donna - 027 5857776



info@urcovered.co.nz

1st Nov - 28th Feb

5% of all New Insurance is
donated to the Northland Rescue
Helicopter



Call now for your free
ACC & Insurance review.



URCOVERED
Discussed, Personalised, Managed, Insurance.



Happy New Year & Happy Holidays

It's time... to relax, kick back, grab an awesomely good coffee and bite to eat at Gumdiggers, and maybe take your visitors and the kids to the magical Kauri Museum. Then mosey on over and check out your local art & craft gallery with its gorgeous work from our very own Kaipara creatives – an eclectic mix of work, very reasonably priced.

New Exhibition Opens 1st January

Our first exhibition for 2025 opens on New Year's Day. Come and see the latest offerings from our wonderful artists and artisans. Now the gift-giving's over and done, perhaps it's time to shout yourself that special piece of art, or that beautifully crafted item you've had your eye on. The New Year exhibition will run until end of February.

Happy Birthday Us, we're turning 10

Yes, we're going to be 10 years old! White Rock opened its doors for the very first time on 1st February 2015 in Paparoa. We can hardly believe it's been that long since we first began our awesome art journey. And here we are ten years on, still going, stronger than ever – it must have been an idea whose time had come.

Thank you for supporting us.

*“Art enables us to find ourselves
and lose ourselves at the same time”
Thomas Merton*

Unichem*
**Proud to support the health
of our local community**

Orrs Maungaturoto

Free Prescriptions for under 13 years old, over 65 years old and Community Services Card holders (aged 14 to 65 years). Only for fully funded medications and if prescription is from a GP or Public Hospital.

If you are facing any financial constraints and are unable to pay for your medications, talk to us as we also have funding available to help cover the cost of medications for eligible patients or families.

Vaccinations (Covid, Flu, Shingles, MMR, Tetanus (Boostrix) etc)*

Vitamin B12 Injections*

Covid-19 Antiviral Tablets*

Flu, Cold and Sore Throat swabbing and Antibiotic Treatment*

Recurrent Herpes Treatment (Cold sores/ Genital herpes)*

Melatonin and Sleep Problems Consultation*

Shingles Treatment (Antiviral tablets)*

Rosacea Consultation*

Emergency contraceptive pill*

Oral contraceptive pill*

Treatment (Antibiotics) for Urinary Tract Infection (for women 16 to 65 years)*

Passport Photos*

Smoking Cessation Consultations*

Erectile Dysfunction (Sildenafil) Consultation*

Blood Pressure Check*

Ear Piercing*

** Some services are fully funded while others are self-funding by the patient or family. Eligibility criteria and Pharmacist discretion applies. Talk to the Pharmacist or staff to discuss available options.*

Delivery Options: We deliver to Skelton's Drapery Paparoa (Licensed Medicine Depot) Free of Charge.

Delivery available via RD1 (\$5 charge + medication cost, if any) to Marohemo, Whakapirau, Pahi, Tinopai and Matakohē.

Open Monday - Friday 9am - 5pm.
Closed Weekends and Public Holidays.

144 Hurndall Street, Maungaturoto
maungaturoto@orrs.co.nz

Phone (09) 431 8045
Fax (09) 431 8808

KAIPARA LANDSCAPE

2 Blakey Road
Maungaturoto

Landscape and Garden supplies, garden ornaments, firewood, digger hire, pots

0800 769 843

Christmas cheer at Selwyn Centre

Paparoa Selwyn Centre for seniors saw the year out with a Christmas party for all the guests and volunteers. A festive buffet luncheon was provided to complete the morning, after the regular (not to be missed!) gentle DVD exercises, followed by morning tea and a singalong with music provided by Mark and Cindy on guitar and violin.

Thursday morning sessions are held weekly, hosted in St Mark's Anglican church foyer, Hook Road. There is fun and participation for all, and for those without transport we endeavour to arrange it where possible. If you are new to the district, or perhaps on your own and wishing to enjoy some social company, a warm welcome awaits you.



We start up again after New Year, on Thursday 9th January.

For further information phone the coordinator Sue on 027 417 4626 or 431 6224.



GREAT BED DEALS

FREE LOCAL DELIVERY ON SELECTED PRODUCTS

\$2 MATTRESS WITH M5 ADJUSTABLE BASE

10 Yr Ltd Warranty

Starting at: **\$2190**



\$2 POCKET SPRING MATTRESS AND BASE SET

Starting at: **\$779**



Pillows | Mattresses | Bedroom furniture |
Linen | Adjustable beds | Bases

**BEDS & MORE
FACTORY OUTLET**

22 Freyberg Road, Ruawai
09 699 4050
ruawai@bedsandmore.nz

Keith the TV Guy**Freeview digital TV**

21 TV and 9 Radio/Music channels are currently being transmitted.

Satellite dishes, decoders, cable etc., supplied and installed.

phone Keith
021 239 4251

BOOKS AND BOOKCLUBS

I don't make New Year's resolutions. I used to, mostly about not eating chocolate, or drinking coffee, but they only lasted a few weeks. So I don't bother any more. Why set myself up for failure? But after reading Sophie Kinsella's "The Undomestic Goddess" I do feel resolved to enjoy life more and stress less. Published in 2005, it speaks to us about the pressure to perform, often at the expense of our health and peace of mind, and also a little about being glued to our phones and devices. It is a relaxing, light and humorous read, perfect for a shady spot under a tree. Therapy in itself. A high-profile London lawyer makes the mistake of her life and loses everything she has worked so hard for. Shell-shocked, she inadvertently finds refuge in a job as a housekeeper, even though she has previously never had time to cook and clean. She has to learn quickly. She discovers, "There is no such thing as the biggest mistake of your existence. There is no such thing as ruining your life. Life's a pretty resilient thing it turns out."



"Queenie Malone's Paradise Hotel," by Ruth Hogan is also delightfully refreshing, written from the viewpoint of a seven-year-old girl and a 46yr-old single woman. Even though it has a wonderfully dramatic opening sentence: "My mother killed my father when I was seven years old," it is not a murder mystery. It is a story about life. The three-part narrative is lavishly sprinkled with quirky characters and vividly detailed descriptions of people and places: "the café wall was painted the colour of ice-cream", (I presume it was vanilla ice-cream, not orange chocolate chip) and wonderful childlike misunderstandings and mis-pronunciation of words, e.g. mis-hearing purgatory as Bermondsey, where people are sent to better themselves. She wonders if her dad went there. The setting is a Hotel and Pier by the seafront in Brighton, England. Very enjoyable. New insights into the story at every turn of the page.

A rather different murder mystery from Peter Swanson (Author of "The Christmas Guest" reviewed last month) is "A Talent For Murder". Possibly one in a series, there are slight indications that some of the characters have known each other previously, but this e-book can stand alone. As with all "whodunnits" I cannot reveal too much without spoiling your enjoyment of the puzzle. This begins with a wife of a one-year-old marriage beginning to wonder just what her husband might be getting up to at the many conferences he has to attend, especially when coincidentally a murder takes place on every date and at every venue he visits. And so her investigation begins. Previous friendships and involvements are revealed. It is different in that it seems to begin in the middle, go back to the beginning, come to a conclusion, and return to the middle. A light-hearted read in spite of the unpleasant content.

A New Zealand non-fiction, by journalist Tom Clarke, is "Our Untold Stories: extraordinary tales from New Zealand's past". This is a selection of stories taken from his 1980s National Radio programme, "Today in History New Zealand". Some of you may have listened to him back then. Written in a no-nonsense, journalistic, reporting style, with the facts themselves holding the reader's interest, each tale is succinctly told in short-story fashion. Tom started researching these stories because there was little being published of New Zealand's historic tales, told by Kiwis themselves. By going about talking to locals he heard some amazing anecdotes of shipwrecks, wahine whalers, airships and landslides. Happily, they are now preserved in book form with something to fascinate everyone's tastes.

"The new year stands before us, like a chapter in a book, waiting to be written." Write it well.

Anne Bate

Painter & Decorator

Tradesman's quality work guaranteed



- Interior
- Exterior
- Spray finishes
- Roofs
- Waterblasting

For your free quote
call Mike 021 529 025

KMU SURVEYS LTD

MAUNGATUROTO

Ken Urquhart

Licensed
Cadastral
Surveyor



09 431 8705

021 161 2344

kenurquhart@xtra.co.nz

KAIPARA PLUMBING LTD

**DRAINAGE
YOUR LOCAL
PLUMBING
SPECIALISTS**

**ALL
GENERAL
PLUMBING
AND
MAINTENANCE**



**Master
Plumbers**
Representing Excellence

PH GRAHAM
027 244 5430

From our family to yours



The fragrance of tamarillo blossom fills the air, the ground is yielding nuggets of carbohydrate goodness (also known as potatoes), the first peaches have been tasted and declared succulent - ah, summer. Late sunsets listening to the birds as warm breeze drifts past, the fresh splash of a great bomb off the Pahi wharf, evocative images of summer living in the Kaipara. We don't go on holiday- we live on holiday.

Summer is abundant, the over supply of tomatoes, cucumber and zucchini make for hilarious interactions- can I swap you 4kg of zucchini for half a lettuce? Each year I mutter something about planting less, and then scatter 250 watermelon seeds in a tray and worry about the consequences in 14 days...


Summer is sticky. That Northland humidity may please (certain) plants, but it can make for uncomfortable nights. Do I even need a sheet? Do I need a light blanket? Shall I just burn the heavy duvets to make more storage space for cucumbers? All valid questions.

Summer is days spent at the regatta, the A&P show and alongside tidal beaches, drifting time and searching for shady spots. Finding someone with a boat, and trying to catch a fish- if successful, self-congratulation about your high levels of self-sufficiency. If not, ah well. Any day on the water is a great one. Sandwiches from the chilly bin, a cool slice of watermelon and an icy cold beverage to wash it down.

Summer is days of nothing in particular, pancakes for lunch, lazy living free from the shackles of routine- unless you are a farmer, or one of plenty of people who work this season, (now aggravated by my ramblings of sheer laziness so typical of me...). I salute you for your hard work. I couldn't do it, so I'm glad someone can. I hope you get to put your feet up under a pohutukawa tree at some point!

Have a super summer Paparoa!

Jenny





Paparoa Community Library

(Behind the Medical Centre)

Opening hours:
 Monday & Wednesday 2pm - 4.30pm
 Tuesday 10am - 1pm
 Thursday 10am - 4pm
 Friday 11am - 1.30pm
 Saturday 10am - 12midday

Out of hours books can be returned to the returns box inside the door to the right at Skelton's Drapery.
 Library Manager 09 431 7555 (During library hours)





White Rock Gallery

Kaipara art & craft

OPEN 7 DAYS 10am-4pm
 5 Church Road, Matakoho
 next to the Kauri Museum

There's something for everyone

Cameron Philips

CABINETMAKER

Matakoho



- Kitchens
- Custom Furniture
- Furniture repairs & restoration
- Custom run mouldings
- Stairs & Timber Doors

QUALITY WORKMANSHIP
09 431 7579
cam@cp-cabinetry.co.nz
<http://cp-cabinetry.co.nz>



COLOUR & CUTZ

Ladies & mens cuts
 Colours & highlights
 Weddings
 Gift vouchers

All colours & products used at the salon are organic

Salon 09 431 7255 Gaylene 021 115 8506

OPEN TUESDAY - SATURDAY
 1994 PAPAROA VALLEY ROAD

YOUR TYRE SPECIALIST

Providing 60 years of service in the heart of Kaipara.

- Tyres
- WOF
- Servicing

- Brakes
- Suspension
- Alignment

- Wheel Balancing
- Batteries

Garnetts Tyre Service

📍 2 Gorge Rd, Maungaturoto

☎ 09 431 8255



New printer!!

You may have noticed last month that the quality of the printing of the Paparoa Press had improved 1000 fold!

There is a new printer at Skelton's Drapery which is where you can get your printing needs seen to!



Business and Home Computer Support

Business Support including:

- Proactive maintenance and support
- Hardware supply & maintenance
- WIFI design, setup and fine tuning
- Printer supply, setup and support
- Backup and Disaster Recovery planning
- Web Hosting
- Office 365 / Azure setup and migration
- Antivirus/firewall TDR EDR

Home Support including:

- Computer upgrades and repair
- New computer supply and data migration
- Setup cloud and local backup
- Smart TV setup
- WIFI design and configuration
- Printer Supply and setup
- Antivirus and security advice
- Friendly, straight forward approach.

Kaipara IT - Making it Easy

Contact Wayne

email support@Kaiparait.co.nz

Ph 0800 2network (0800 263896)

or 0226485713 www.kaiparait.co.nz

Science Corner



Cats eyes

Once again, nature provides the answers!

People using drones were finding it difficult to distinguish detail on the ground in low visibility conditions.

It has been discovered that if they copy the way a cat's eye works this problem can be overcome.

Cats (like some other night-time animals) have a tapetum lucidum or reflective layer that enhances vision by reflecting visible light back through the retina, thus increasing what they can see. It also makes their eyes appear to glow in the dark when you are using a spot light.

Cat's eyes have other features that help see in the dark:

1. Six to eight times more rod cells which help in seeing in low light situations.
2. They have a slit like aperture. This aperture opens and shuts, and filters out unnecessary light, allowing single tracking of objects, (mice?).

So many times, the answers to problems have already been solved by our wonderful world of nature.

Stella



Paparoa Roadside Delivery Service

We deliver to Maungaturoto & Paparoa every Thursday.

It's simple! Order your pet food online.

We meet you in Paparoa at 1pm Thursday.



Or visit our store at 41 Moir St, Mangawhai
8am-5pm weekdays | 9am-2pm Saturdays

Call Steve 027 292 4891 www.bobandben.co.nz

Plum Clafoutis

Clafoutis is lighter than a pie because it is made with batter not pastry. It's quick to whip up and you can use any stone fruit you have. The batter will fluff up in the oven then sink when removed.

Ingredients

10 Plums, halved, stones removed

4 Eggs

1 tsp Vanilla

½ cup Caster sugar

½ cup Flour

1 ½ cups Cream, or milk

1 Orange, zest

Icing sugar to dust

Directions

1. Heat oven to 180C.

2. Lightly grease an ovenproof baking dish. In the dish place the plums cut-side down. It doesn't matter if they are slightly piled.

3. Place eggs, vanilla, sugar, flour, cream, and zest in a blender. Blitz until smooth. Pour over the plums.

4. Bake in the oven for 40 minutes, until just set in the middle.

5. Dust with icing sugar and serve warm with whipped cream, yogurt or ice cream.



ADAM STEVENS BUILDER

Licensed
Building Practitioner

For new builds,
alterations and roofing

021 741 363 A/H 09 431 6245

do you need a
WEBSITE ?

Local, friendly
website design
& management.
sme-sitedesign.co.nz

Contact Paul for more information:
E: paul@sme-sitedesign.co.nz
T: 09 431-7063
M: 022 625-4156

**Get More Customers
Cost Effective Marketing**

BRYCE

THE LOCKSMITH LTD

**Master
Locksmith**

**Bryce Frewin
Paparoa**

Ph: 021 850 983



bryce@brycethelocksmith.co.nz
www.brycethelocksmith.co.nz

g.a.s.
Petrol Service Stations

Paparoa

Open 7 days
Mon-Sun 6am-10pm
gasolinepaparoa@gmail.com

- Petrol, diesel & oil
- Fresha Valley milk
- Pies
- Barista coffee
- Great variety of snacks
- Pet food - cats/dogs
- Cop-Rice biscuits 20kg
- Great variety of bait and all fishing requirements
- Top ups & prepay
- Frozen foods
- Firewood
- Hardware
- TRAILER HIRE



**Phone
09 431 6302**



4 Hook Rd
Paparoa
Northland
phone
Sam Turner
022 317 1507

Paparoa Community Church

Connecting with God
Creating Community
Communicating the
Gospel



Church Service on Sunday at 10 30am
6pm for fellowship, prayer and sharing.
Everyone Welcome

W.J.BARKER SCAFFOLDING

A local scaffolding service for any renovation, painting, new build, roofing & access requirements.

Call anytime for an estimate.

0204 186 8964
09 280 9520

www.wjbarker-scaffolding.co.nz
info@wjbarker-scaffolding.co.nz

Local JPs

Robyn Skelton, Paparoa
4317306 or 0272922787
Business hours only

Val Faulkner, Paparoa
021687226

Evenings and weekends

Graham Withers, Tinopai
2809552 or 02102545799

Derek Birt, Mareretu
4316847

Karen Weber, Matakohe
431 7087 or 027 272 6676
By appointment.

WHAT'S ON - JANUARY 2025

The Kauri Museum - open 7 days, 9am-5pm.

White Rock Gallery - 5 Church Rd Matakohe (Kauri Museum) Open 7 days 10 - 4

Paparoa Community Picnic - Sun Jan 19, from 4.30pm, The Village Green. See p11.

Pahi Regatta - Sat Jan 25 - Sun 26. See p2 for more info.

Paparoa A&P Show - Sat Feb 1, 9am, at the showgrounds. See p1 & 20 for more info.

OUT & ABOUT AROUND TOWN

Paparoa's Farmers Market Happens every Saturday morning, 9am-12 at the Village Green. Fresh fruit & veges, sweet treats, plants, fish, eggs, assorted crafts, live music and so much more. A great place to catch up with friends or make new ones.

Grow Whakatipu Paparoa Drop in for a chat, hands on experience, or a cuppa. Every Thursday & Friday 9am - 12pm. Next to the showgrounds.

Paparoa Golf Course Twilight golf. Fridays 5pm. 9 holes, \$5. Food available. Enquiries to club secretary on 022 678 1474.

Paparoa Beats 88.3fm Community radio based right here in Paparoa. A "Beautiful Resistance" to the mainstream. Also available online at paparoabeats.radio12345.com. If you would like to get involved and play your own tunes you can contact them on paparoabeats@gmail.com.

Trevor Brljević

13 August 1930 - 26 December 2024

Full obituary in February issue.



**House Construction, Alterations
Renovations or General Repairs**




www.battensbybrothers.co.nz



Call to book us now for ...

- ◆ Ground Cultivation
- ◆ Silage and Hay
- ◆ Fertiliser spreading
- ◆ Firewood (WINZ approved)



Contact Glenn on 021 983 734

Email: battensbybrothers@xtra.co.nz

Our heartfelt condolences to Ruth and family on the passing of

Bill Smellie

long-time resident of Pahi and Paparoa

Our thoughts are with the family of

Jeff Allen (Possum)

of Mareretu, who recently passed

We are also sorry to hear of the passing of

Marie Martin of Maungaturoto.

A huge THANK YOU to the people who make sure you get your copy of Paparoa Press each month: Our hardworking local RD posties - Michael and Maree (and helpers), Sally Taylor, Ken Chambers, and Pauline and Wayne Young.

REGULAR EVENTS, MEETINGS AND ORGANISATIONS

Anglican Church St Marks Hook Road, ph 431 8193 or 431 6224 for services info

Ararua Church 10.30am every Sunday. All welcome Ph 431 6622

Art Studio, Ruawai Wed 10-12noon ph Frances 439 2554

Badminton Thursdays 7pm Paparoa Hall \$2 students, \$3 adults, Pete 021 056 7163

Ballroom Classes - Mondays 6pm at the Paparoa Memorial Hall. Social foxtrot, waltz, cha cha, rumba, slow jive etc). \$15pp. For more info ph Lisa on 021 828-531.

Farmers' Market Every Saturday 9-Noon, Village Green, Alistair, 027 525 4782

Grey Power Last Wed in month, 1pm, Anglican Church Hall, Maungaturoto

Grow Paparoa Thur/Fri 9am to 12pm at the Community Gardens

Holy Trinity Anglican Church, Maungaturoto, All welcome. Ph 431 8193 for services information.

Kaipara Marching Team Weds 4-5.30pm, M'gto, Ph Lyn Hutchings 022 070 8674

Line Dancing Thurs 10am-noon Paparoa Hall Ph Jackie Cornes 027 368 7298

Paparoa Mah Jong Group 1st & 3rd Tues, Paparoa Hall 1.30-4pm, Sara 021 0774947

Mainly Music Wed 9.30am Paparoa Comm Church, Lynaire Porteous 431 7520

Matakohe Garden Circle 1st Weds each month, 1pm, J Mackinnon 431 6689.

Maungaturoto Opportunity Shop Open Mon, Wed, Thurs, Fri 10am-3pm.

Alternate Sat mornings 10am-1pm.

Maungaturoto and Districts Rotary Club Maungaturoto Centennial Hall,

Tuesday evenings 6pm, Ph Stella 021 149 0877

Otamatea Quilters 1st and 3rd Mon month 10am, Paparoa Hall 09 439 2262

Outdoor Bowls Maungaturoto Green Ph Tony 431 6026 or Brian 431 6884

Pahi Hall available for hire Ph Tina 0210335128

Paparoa Community Church Sundays 10.30am, 4 Hook Road, 431 6795 or Dave Porteous 0274 180 676

Paparoa Box Fit Every Wednesday 6-7pm, Stretching/Cardio/Boxing \$10, Paparoa Hall, Stacey Watson 09 283 9931

Paparoa Dance to Music Every Tuesday 10:30-11:30, Stretching/Balance/Resistance/Bands/Zumba, \$5, Paparoa Hall, Stacey Watson 09 283 9931

Paparoa Garden Circle 2nd Wed of month. Contact Raylee Over 021 2565 893

Paparoa Hall Functions venue Ph Robyn 431 7306 or a/h Loraine 431 7290

Paparoa Library Mon, Wed 2-4.30, Tues 10-1, Thurs 10-4, Fri 11-1.30, Sat 10-12.

Library Manager 09 431 7555 during library hours. Returns Box at Skeltons

Paparoa Lions Dinner Meetings 3rd Mon in month 6.30pm, Sports Pavilion

Paparoa Playcentre Tuesday and Thursday 10am-1pm. Franklin Rd. Visitors welcome. paparoa@playcentre.org.nz

Paparoa Primary School 2024 - term 4 ends Friday 13 Dec. 2025 - term 1 starts Thursday 30 Jan, ends 11 April. Ph 431 7379

Paparoa Toy Library Wed 10.30-1pm, Paparoa Comm Church, Hilery 431 7330

Paparoa Volunteer Rural Fire Force (VRFF) 1st and 3rd Monday of the month 6.30pm Depot Rd ph Ken Ogilvie 021 129 4042

Plunket Ready Steady Wriggle Mon 10am. At playcentre. Tina Ball 021 033 5128

Selwyn Centre Thurs 9.45am for over 65's, St Marks, Hook Rd, Ph Sue 431 6224

Sports Pavilion Functions Venue Bookings ph Jane Bailey 431 6148

St Mary's Catholic Church Maungaturoto 10am Wed, 4pm Saturday

Table Tennis Tues 7.30pm, Sports Pavilion \$2 Pete 021 056 7163

Tennis Tues Junior from 4pm, Adult 5.30pm, Ph Sue 431-6224, Pete 0210567163

Yoga For Everyone Tues and Fri, 9.30am, Sports Pavilion. Hatha yoga & more. \$15. Equipment provided. Beginners welcome. Ph Luciana for more info 0221896496

PLEASE UPDATE US WITH YOUR DETAILS: press@paparoa.org.nz

Paparoa Press CLASSIFIED ADVERTISING

Storage Available

In Paparoa: Secure 20 foot Containers - contact Gary Dallas 021 431 712
Paparoa County Depot Trust



Your Ad Here!

Paparoa Press classified ads are a great way to buy, sell, or promote services. This ad \$5 + \$5 for a photo.
Email press@paparoa.org.nz



**Buy Local
Support Local**
Help your community thrive
and businesses survive

LOCAL TIDES for JANUARY 2025

TIDES - CALCULATED for PAHI-WHAKAPIRAU

DATE	LOW	HIGH	DATE	LOW	HIGH
1st	6.36	13.02	17th	7.56	14.24
2nd	7.16	13.42	18th	8.32	15.00
3rd	7.57	14.23	19th	9.08	15.36
4th	8.40	15.08	20th	9.46	16.16
5th	9.26	15.55	21st	10.28	16.59
6th	10.16	16.47	22nd	11.17	17.49
7th	11.13	17.44	23rd	12.18	18.48
8th	12.17	18.47	24th	13.30	7.29
9th	13.27	7.30	25th	14.43	8.44
10th	14.39	8.42	26th	15.44	9.49
11th	15.45	9.51	27th	16.34	10.41
12th	16.42	10.50	28th	17.19	11.25
13th	17.34	11.41	29th	18.01	12.06
14th	18.20	12.26	30th	18.43	12.45
15th	19.03	13.08	31st	6.59	13.25
16th	7.18	13.47			

Community Directory

EMERGENCY: FIRE ■ POLICE ■ AMBULANCE dial 111

COAST TO COAST HEALTH CARE

Maungaturoto Medical Centre: 8am-5pm Mon-Fri 09 431 8576

Paparoa Clinic: Open Tues and Thurs 8am-5pm..... 09 431 7222

For urgent after hours medical service (Wellsford)..... 09 423 8086

DISTRICT NURSE Dargaville Hospital 09 439 3330

Healthline - 24 hour service..... 0800 611 116

HOSPICE KAIPARA Dargaville Hospital 09 439 3330

KAIPARA DISTRICT COUNCIL Helpline 0800 727 059

LINKING HANDS Health Shuttle Service, Maungaturoto.09 431 8969

LIONS CLUB PAPAROA President Ken Chambers09 4317443

MAUNGATUROTO PHARMACY 09 431 8045

MAUNGATUROTO REST HOME 09 431 8696

OTAMATEA COMMUNITY SERVICES Community House 09 431 9080

PAPAROA LIBRARY Free Membership. Ph 09 431 7555 (Bus hours)
Mon, Wed 2-4.30, Tues 10-1, Thurs 10-4 Fri 11-1.30, Sat 10-12

PAPAROA PLAYCENTRE paparoa@playcentre.org.nz

PAPAROA PLUNKET Plunket Nurse Louise 027 2823987 or 09 438 2508

PLUNKET Helpline 0800 933 922

PAPAROA PRIMARY SCHOOL Principal Karyn Taylor.....09 431 7379

PHYSIOTHERAPIST At Paparoa Medical Centre, Mon, Tues, Wed.

Book on 431 9062 or email admin@maungaturotophysio.co.nz

PROGRESSIVE PAPAROA INC (PPI).....Pete Hames 021 0567163

PARENT PORT Inc. free help for families.. 425 9357 or 027 280 5093

Paparoa A&P Show: Fun for the Whole Family

The annual Paparoa Agricultural and Pastoral (A&P) Show is back on Saturday February 1, promising a day filled with fun, tradition, and new attractions for all ages. Held at the Paparoa Showgrounds, this year's event will feature all the classic activities that locals and visitors love, plus some exciting new additions.

From food stalls offering delicious treats to the much-anticipated gumboot throwing competition and Kumara 500 race, the event highlights everything that makes rural life so special. Local bakers and gardeners will have the chance to shine in the baking and flower competitions, while livestock lovers can marvel at the champion cattle, horses, and sheep-shearing contests. And of course the woodchoppers!

New to the show this year is a heritage vehicle display, showcasing beautifully restored vintage and classic vehicles that will delight history buffs and car



2024 show

enthusiasts alike.

There's even more good news for families: for the first time, children's rides, including the merry-go-round and bouncy castle, will be completely free. This exciting addition ensures a fun-filled day for the little ones without added cost.

"The Paparoa A&P Show is a wonderful tradition that brings our community together to celebrate

rural life and enjoy some good old-fashioned fun," says A&P Show President Janine Hames. "With this year's new attractions and free rides for the kids, we're looking forward to welcoming even more families to

the Show."

Gates open for the Show at 9am. Admission charges are \$10 per adult, \$5 for children 5-17 yrs per child for the first two, all others and under 5s free.

For details on the show see www.paparoashow.org.nz or follow on www.facebook.com/PaparoaShow.

**2025 Paparoa A&P Show
Saturday February 1**

Grant O'Neill

Follow the yellow flowered road

What is the flower that gives our roadsides the golden yellow side strip?

I thought they were dandelions - but I was wrong!

Dandelions have smooth leaves with hooks on the sides pointing downwards and hollow stems. These have hairy leaves with upward pointing hooks, solid stems, and smaller flowers sometimes branching on stalks. They're common name is Cats Ear, or "Hypochaeris radicata", - false dandelion!

From Europe, these perennials, like dandelions, have fluffy seed heads.

Like dandelions they can be eaten and the root dried and ground as a coffee substitute. (Not from the roadside. Yuk!)

Why have these plants become so predominate along our roadsides? I suspect that they are tolerant, or very quick to recover, as they seem to thrive on the roadside which has been previously weed sprayed. Stella



Photo: Nigel Russell

Community PICNIC

SUNDAY JANUARY 19TH, FROM 4:30PM
JOIN US AT THE VILLAGE GREEN

You are invited to the Paparoa
Community picnic.
Please bring your own picnic
Gazebos provided
All welcome

See You There!

P
PROGRESSIVE
PAPAROA

For more details contact progressive.paparoa@gmail.com

*Wishing you a safe and
happy holiday season from
your local professional
Team!*

India Williamson
Salesperson

india.williamson@professionals.co.nz
027 4109 078

Shar Schultz
Salesperson

shar.schultz@professionals.co.nz
022 0464 790

David Ayling
Salesperson

david.ayling@professionals.co.nz
027 2378 919

Emma Hill
Property Manager

rentals.srl@professionals.co.nz
027 2378 919

Schultz Realty Ltd Licensed Under REAA 2008
Maungaturoto
www.professionals.co.nz/offices/northland/maungaturoto